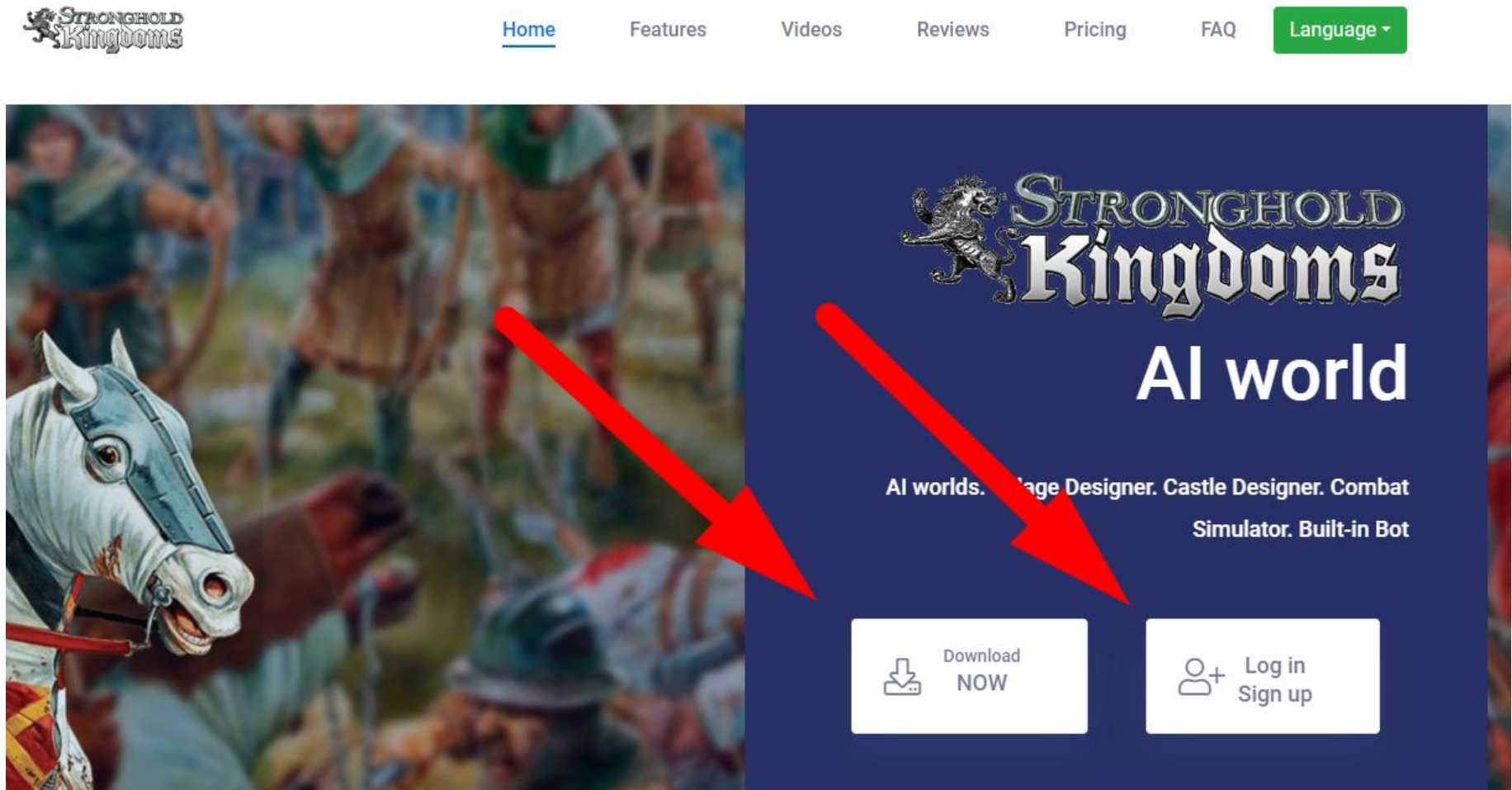



The download and sign up links are present at <https://world.shkbot.site/>



Note: Downloads page allows to download few of the previous versions, but we recommend to go for Current Version

# Downloads



**Current Version: 98**

- Version 93
- Version 88
- Version 87
- Version 64
- Version 29
- Version 12
- Version 11
- Version 10
- Version 9

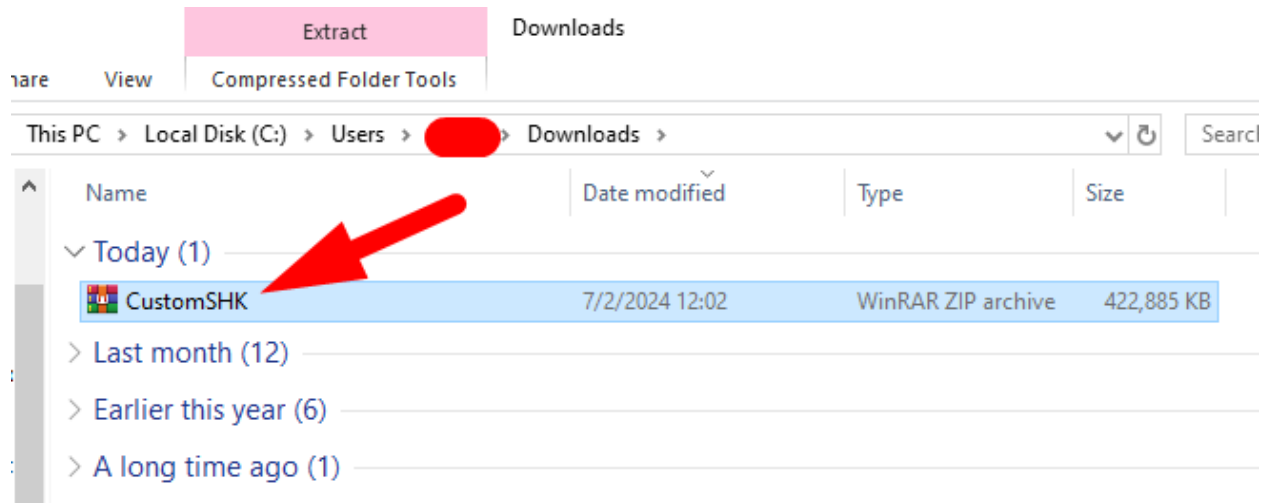
[Download](#)

## Version 97-98 Changes - 2024 February 25th

**new** Right click to Cash In all cards of a type

Press CTRL+F5 before downloading. It cleans up browser cache and makes sure You download up-to-date file

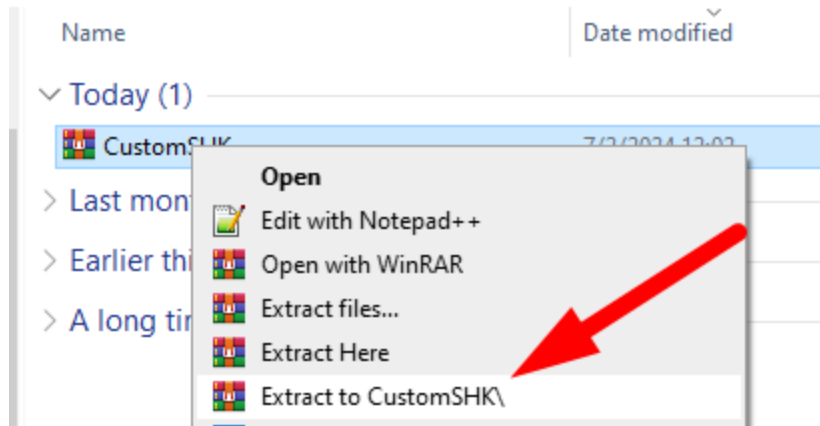
Here is your downloaded file



File Explorer window showing the Downloads folder. The file 'CustomSHK' is highlighted, with a red arrow pointing to it. The file is a WinRAR ZIP archive, 422,885 KB, and was modified on 7/2/2024 at 12:02. The breadcrumb path is 'This PC > Local Disk (C:) > Users > [redacted] > Downloads >'. The 'Extract' tab is active in the ribbon.

Name	Date modified	Type	Size
CustomSHK	7/2/2024 12:02	WinRAR ZIP archive	422,885 KB

Right click it to extract files



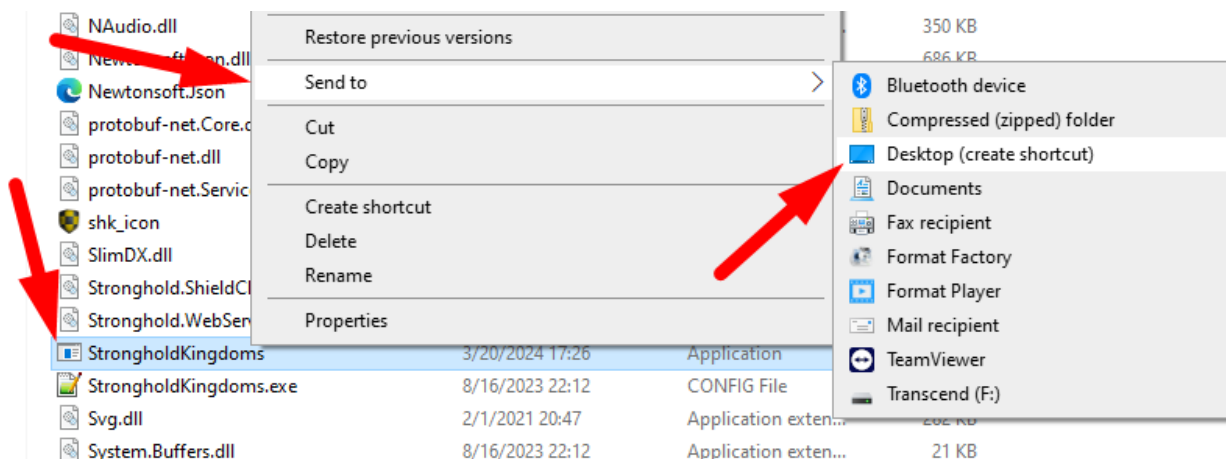
Now you can put them into D:\Games\

This PC > D (D:) > Games > CustomSHK

Name	Date modified	Type	Size
AssetIcons	7/2/2024 13:00	File folder	
Assets	7/2/2024 13:00	File folder	
BotSettings	7/2/2024 13:00	File folder	
GeckoFX	7/2/2024 13:00	File folder	
Localization	7/2/2024 13:00	File folder	
AssetLoading.dll	2/1/2021 20:47	Application exten...	16 KB
CommonTypes.dll	12/6/2023 13:26	Application exten...	777 KB
CookComputing.XmlRpcV2.dll	2/1/2021 20:47	Application exten...	116 KB
DXGraphics.dll	2/1/2021 20:47	Application exten...	100 KB
Geckofx-Core.dll	2/1/2021 20:47	Application exten...	1,285 KB
Geckofx-Winforms.dll	2/1/2021 20:47	Application exten...	134 KB
IServiceContract.dll	12/6/2023 13:26	Application exten...	27 KB
LastDownloadedVersion	3/20/2024 17:25	TXT File	1 KB
NAudio.dll	2/1/2021 20:47	Application exten...	350 KB
Newtonsoft.Json.dll	3/17/2021 20:03	Application exten...	686 KB
Newtonsoft.Json	3/17/2021 19:58	Microsoft Edge H...	694 KB
protobuf-net.Core.dll	8/16/2023 22:12	Application exten...	281 KB
protobuf-net.dll	8/16/2023 22:12	Application exten...	270 KB
protobuf-net.ServiceModel.dll	8/16/2023 22:12	Application exten...	18 KB
shk_icon	2/1/2021 20:58	Icon	114 KB
SlimDX.dll	2/1/2021 20:47	Application exten...	2,910 KB
Stronghold.ShieldClient.dll	2/1/2021 20:47	Application exten...	96 KB
Stronghold.WebService.dll	2/1/2021 20:47	Application exten...	128 KB
StrongholdKingdoms	3/20/2024 17:26	Application	7,387 KB
StrongholdKingdoms.exe	8/16/2023 22:12	CONFIG File	7 KB
Svg.dll	2/1/2021 20:47	Application exten...	282 KB
System Buffers.dll	8/16/2023 22:12	Application exten...	21 KB
System.Collections.Immutable.dll	8/16/2023 22:12	Application exten...	105 KB

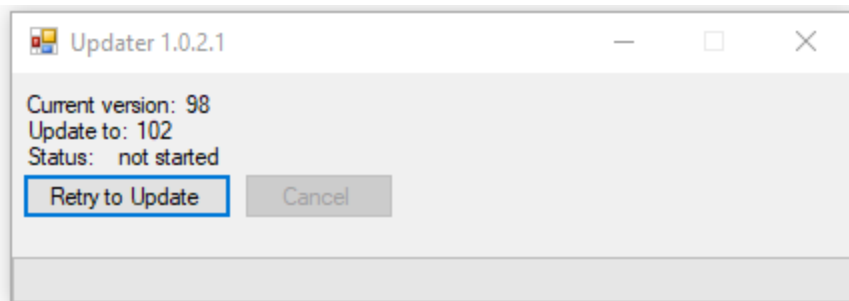
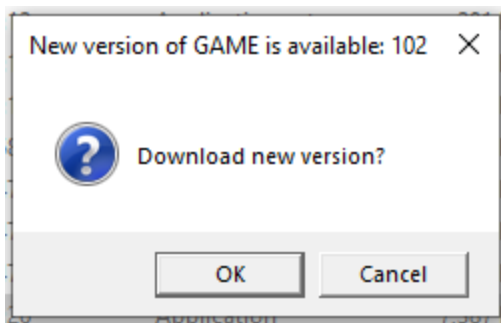
Note: We recommend to add StrongholdKingdoms.exe and updater.exe to antivirus and Windows Defender exceptions (“white list”) <https://www.youtube.com/watch?v=3yznHjvvPEs>

You can also create desktop icon



You may be suggested updates when you launch StrongholdKingdoms.exe

We recommend to click OK



Note: If you didn't add StrongholdKingdoms.exe file to antivirus exceptions, it may get deleted and the game won't work.

Here you can use email and password that you specified on the sign up page  
<https://world.shkbot.site/home/>

Stronghold Kingdoms

[Forgotten Password](#) [Create Account](#)

[Updates](#) [Website](#) [Cool stuff!](#)

Sticky:

- [Help links](#)
- [Допомога, підтримка, підказки](#)
- [Happy Holidays! Our 2023 summary is ready](#) new

Happy Holidays everyone!

Our 2023 summary with in-game videos and screenshots is ready:  
[click here](#)

Posted on Tuesday, 5th of December 2023

Email Address

Password

[Login](#)

Version : 102 [Exit](#)

The game also requires:

.NET Framework 4.7.2

<https://support.microsoft.com/en-us/topic/microsoft-net-framework-4-7-2-offline-installer-for-windows-05a72734-2127-a15d-50cf-daf56d5faec2>

Note: Old game is using .net 3.5. Windows 10 systems come with .net 4.0 preinstalled. This is why you might be missing .net 4.7.2

DirectX 9.0c or newer

<https://www.microsoft.com/en-us/download/details.aspx?id=8109>

Note: If you already have old game running on this computer, then DirectX is most likely already installed

Microsoft Visual C++ Redistributable

<https://learn.microsoft.com/en-us/cpp/windows/latest-supported-vc-redist?view=msvc-170>

Scroll down until you see this section with download links:

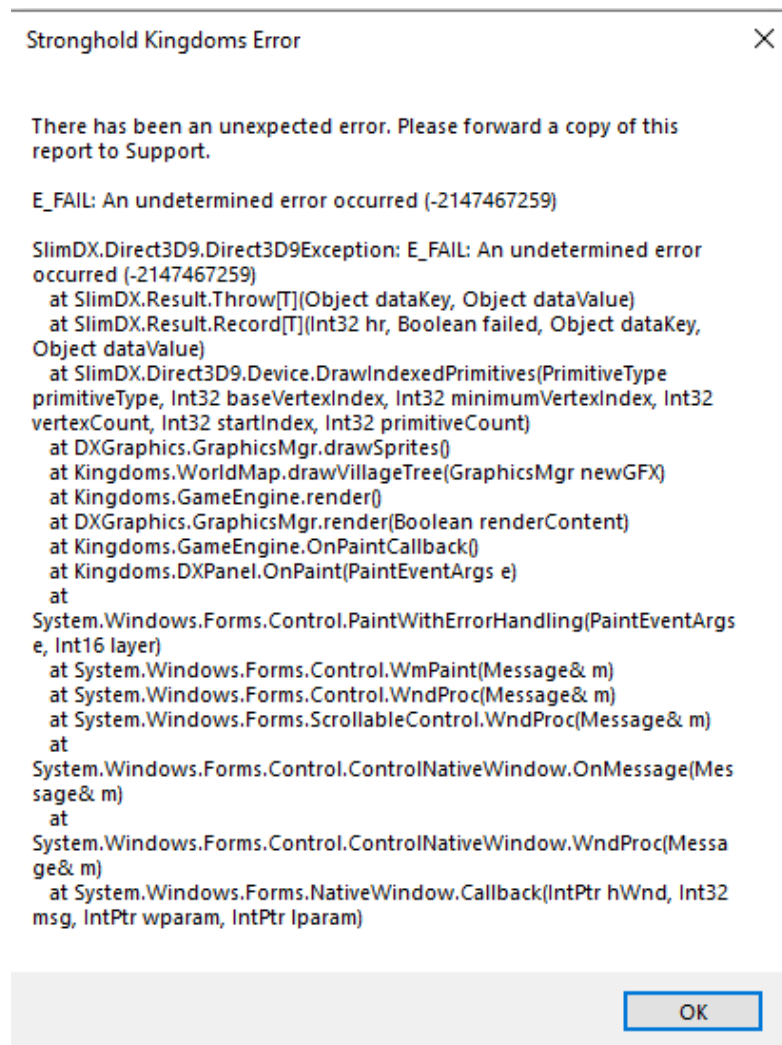
Architecture	Link	Notes
ARM64	<a href="https://aka.ms/vs/17/release/vc_redist.arm64.exe">https://aka.ms/vs/17/release/vc_redist.arm64.exe</a>	Permalink for latest supported ARM64 version
X86	<a href="https://aka.ms/vs/17/release/vc_redist.x86.exe">https://aka.ms/vs/17/release/vc_redist.x86.exe</a>	Permalink for latest supported x86 version
X64	<a href="https://aka.ms/vs/17/release/vc_redist.x64.exe">https://aka.ms/vs/17/release/vc_redist.x64.exe</a>	Permalink for latest supported x64 version. The X64 Redistributable package contains both ARM64 and X64 binaries. This package makes it easy to install required Visual C++ ARM64 binaries when the X64 Redistributable is installed on an ARM64 device.

Note: If you already have old game running on this computer, then C++ Redistributable is most likely already installed

## Drivers for your videocard

Note: You can find download links at your videocard manufacturer website or your laptop manufacturer videocard website

Note: If you have multiple videocards (integrated and dedicated graphics card), you may have issues running the game with one of them while the other videocard will work as expected.





In this example the laptop has integrated graphics provided by Intel and dedicated Nvidia graphics card. Use "Add" button to find StrongholdKingdoms.exe and select dedicated graphics for it.

NVIDIA Control Panel  
File Edit Desktop 3D Settings Help

Back

Select a Task...

- 3D Settings
  - Adjust image settings with preview
  - Manage 3D settings**
  - Set PhysX Configuration
- Display
  - Change resolution
  - Adjust desktop color settings
  - Rotate display
  - View HDCP status
  - Set up digital audio
  - Adjust desktop size and position
  - Set up multiple displays
- Video
  - Adjust video color settings
  - Adjust video image settings

## Manage 3D Settings

You can change the global 3D settings and create overrides for specific programs. The overrides will be used automatically each time the specified programs are launched.

**I would like to use the following 3D settings:**

Global Settings Program Settings

Windows OS now manages selection of the graphics processor. [Open Windows graphics settings](#)

1. Select a program to customize:

Add Remove Restore

Show only programs found on this computer

2. Select the preferred graphics processor for this program:

High-performance NVIDIA processor

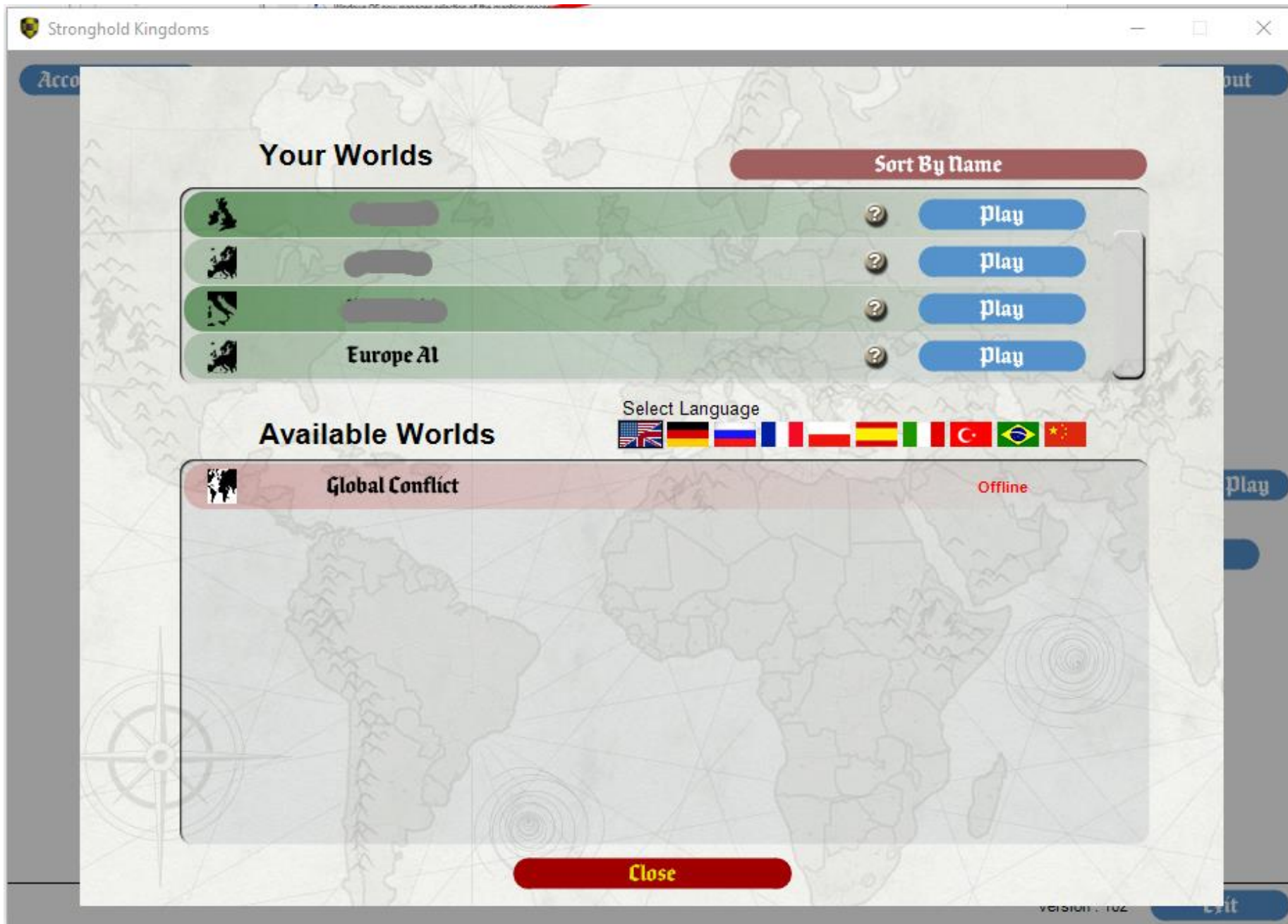
Use global setting (Auto-select: Integrated)

High-performance NVIDIA processor

Integrated graphics

Feature	Setting
Image Scaling	Use global setting
Ambient Occlusion	Not supported for this application
Anisotropic filtering	Use global setting (Application-controlled)
Antialiasing - FXAA	Use global setting (Off)
Antialiasing - Gamma correction	Use global setting (On)
Antialiasing - Mode	Use global setting (Application-controlled)

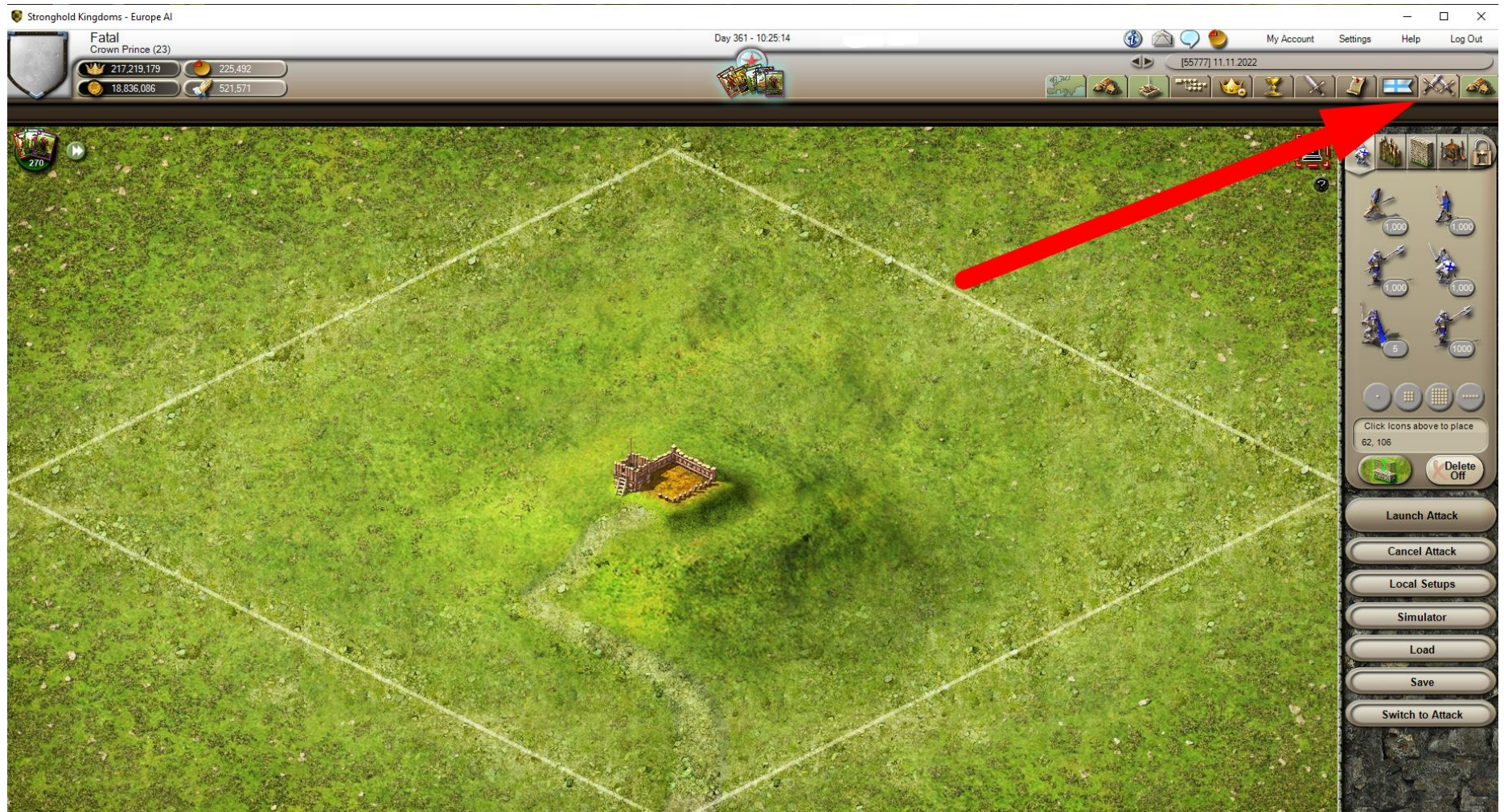
Once it's all set, choose a game world and click "Play"



You need to site a village to have access to Castle Designer, Combat Simulator and Village Designer.

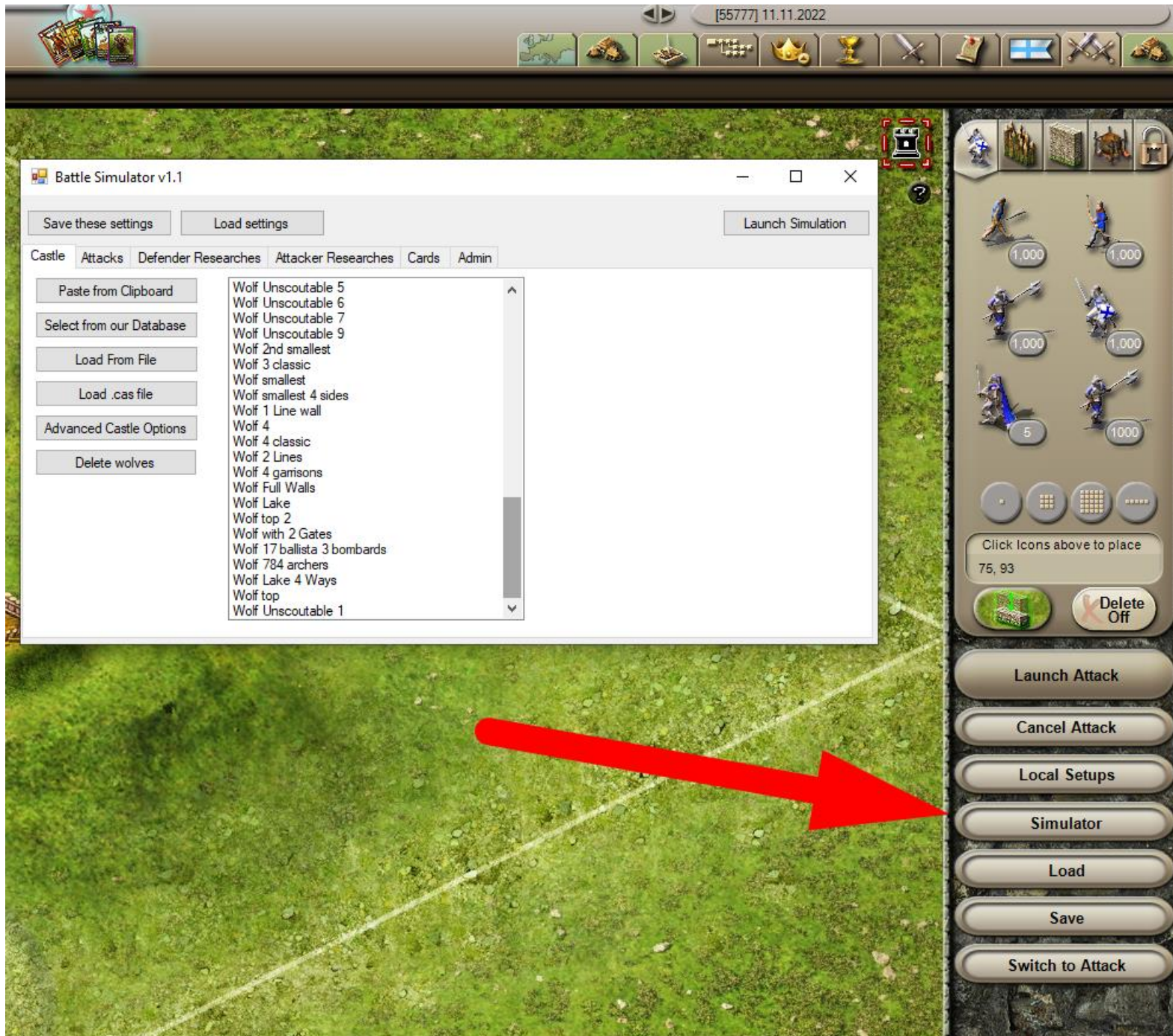


# Castle Designer:





Combat Simulator is on the same tab:





# Village Designer:

The screenshot shows the Village Designer interface. At the top, there is a toolbar with various icons for building and editing. On the right sidebar, there are buttons for 'Designer' and '1,700'. A red arrow points from the top toolbar to the 'Designer' button. Another red arrow points from the 'Designer' button to the 'Village Designer' window.

The 'Village Designer' window displays a table of available village layouts:

Show	Edit	Delete	ID	Name	Description	Village type	Villa
Show	Edit	Delete	1	Top AI Highland	AI castles of top t...	Highland	5
Show	Edit	Delete	2	Top AI Wine	AI castles of top t...	Valley Side	5
Show	Edit	Delete	3	Top AI Salt	AI castles of top t...	Salt Flat	5
Show	Edit	Delete	4	Top AI Spices	AI castles of top t...	River 1	5
Show	Edit	Delete	5	Top AI Silk	AI castles of top t...	River 2	5
Show	Edit	Delete	6	Top AI Highland ...	AI castles of top t...	Highland	5
Show	Edit	Delete	7	Top AI Plains	AI castles of top t...	Plains	5
Show	Edit	Delete	8	The Wolf Tier 4 ...		Highland	4
Show	Edit	Delete	9	The Pig Tier 1 Hi...		Highland	1
Show	Edit	Delete	10	The Snake Tier 4...		Highland	4
Show	Edit	Delete	11	Top AI Mountain ...	Lots of weapons ...	Mountain Peak	5
Show	Edit	Delete	12	Top AI Lowland		Lowland	5
Show	Edit	Delete	13	AI Tier 4 Lowland		Lowland	4
Show	Edit	Delete	14	AI Tier 3 Lowland		Lowland	3
Show	Edit	Delete	15	AI Tier 2 Lowland		Lowland	2
Show	Edit	Delete	16	AI Tier 1 Lowland		Lowland	1
Show	Edit	Delete	17	AI Tier 0 Lowland		Lowland	0
Show	Edit	Delete	18	AI Tier 4 Forest		Forest	4
Show	Edit	Delete	19	AI Tier 3 Forest		Forest	3